

OUTDOOR AIR COOLED CHILLER DATA - TEST SHEET

CUSTOMER NAME	WILL ELECTRIC LTD
CHILLER SERIAL NUMBER	0518 - 2374
CUSTOMER JOB NUMBER	WILL - 2004
CHILLER MODEL NUMBER	OAC-5SZV-SP
CAPACITY (Ton)	2.8 TON
CHILLER OPERATING TEMPERATURE	24.8 °F
REFRIGERANT TYPE (R-22, R-407c, R-134a, etc.)	R-410A
CHILLER ELECTRICAL SUPPLY (V/Ph/Hz)	208 / 3 / 60
TEST DATE	JULY 2018

COMPRESSOR DATA

QUANTITY	1
MANUFACTURER	COPELAND
TYPE (Reciprocating, Scroll, Screw, etc)	SCROLL
CIRCUITS	CIRCUIT 1
MODEL NUMBER	ZP61K5E-TF5
SERIAL NUMBER	15HE6405N
MOTOR HP	5 HP
COMPRESSOR RLA	18.3 A
COMPRESSOR LRA	123 A
ACTUAL RUN AMPS DURING TEST	12.4 / 11.8 / 11.2 A
FREON WEIGHT	16.5 LBS
OIL TYPE	POE (POLEYSTER)

AC CONDENSER COIL DATA

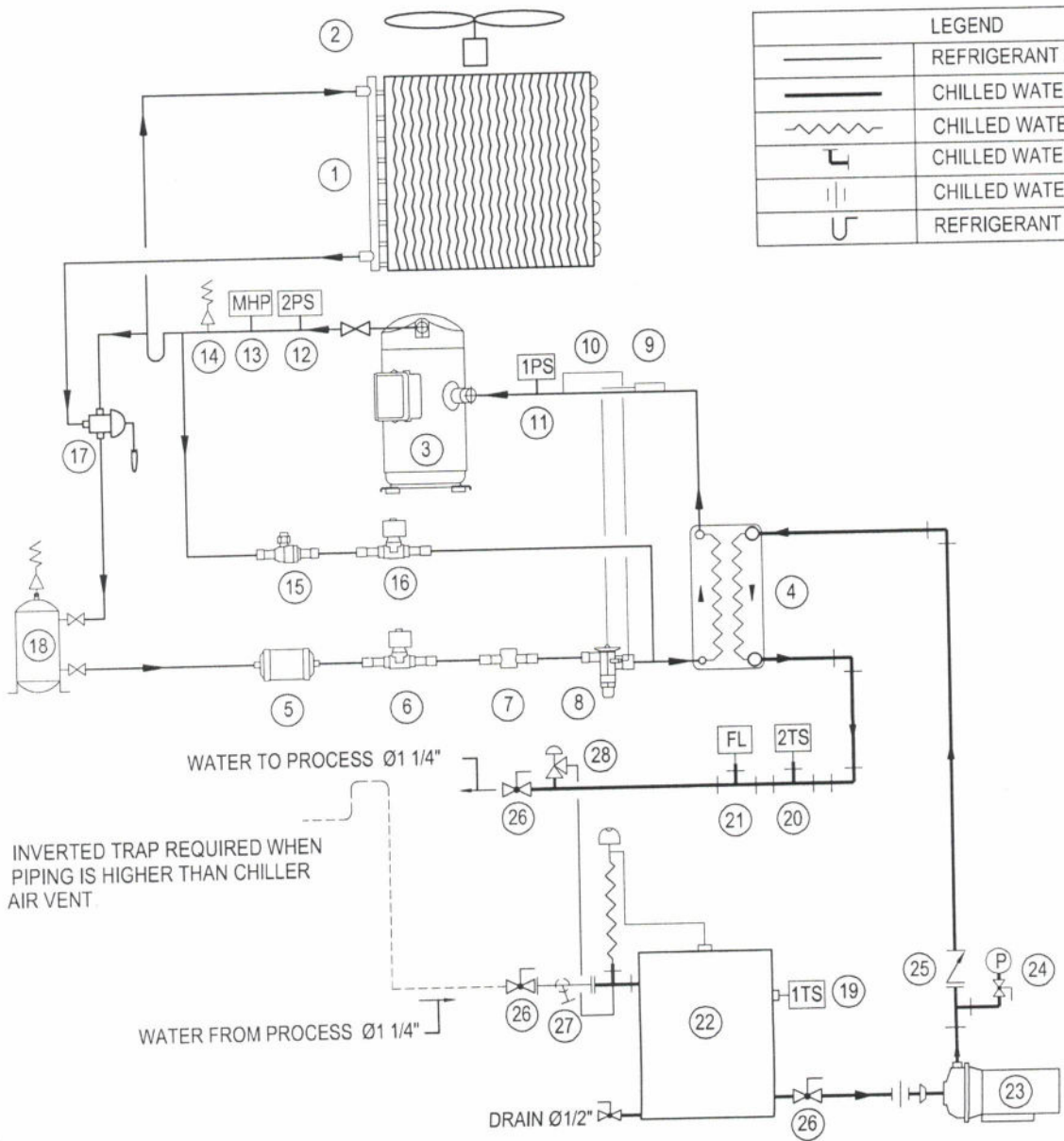
QUANTITY	1
MANUFACTURER	LUVATA
CIRCUITS	1
MODEL NUMBER	3CX1802D-048 x 38L-7.5
ROWS	COPPER TUBE
FINS	ALUMINUM FINS
AIR FLOW	5,700 CFM

FAN DATA

QUANTITY	1
MANUFACTURER	ZIEHL-ABEGG
FAN TYPE (Propeller Fan, Centrifugal Blower)	PROPELLER FAN
FAN SERIAL NUMBER	FN-080-SDQ.6N.V7
FAN MOTOR HP	1/2 HP
FAN MOTOR RPM	850 RPM
FAN MOTOR FLA	4.4 A
ACTUAL RUN AMPS DURING TEST	3.5 / 3.5 / 3.5 A

REFRIGERATION CONTROLS / INSTRUMENTATION				
CONTROLLER MANUFACTURER		FULL GAUGE CONTROLS		
CONTROLLER TYPE		MT-543E		
CAPACITY CONTROL (Cycling, Unloading, Hot-gas, Others)		CYCLING		
CONTROLLER STAGES (2, 3, 4, 5, 6, etc)		2 STAGES		
CONTROLLER SENSES (Entering / Leaving Coolant, Other)		ENTERING		
CHILLER CONTROL SETTINGS				
REFRIGERANT TYPE (R-22, R-407c, R-134a, etc.)		R-410A		
CIRCUITS		CIRCUIT 1		
LOW PRESSURE SENSOR CUT OUT / CUT IN		60 / 85 PSIG.		
MANUAL HIGH PRESSURE SAFETY SWITCH		610 PSIG.		
EVAPORATOR FREEZESTAT		20 °F		
REFRIGERANT PIPING PRESSURE TESTED TO:				
R410A	236 PSI	OK	340 PSI	OK
R134A	86 PSI		136 PSI	
R404A	175 PSI		254 PSI	
R407C	166 PSI		242 PSI	
DIELECTRIC STRENGTH TEST				
POWER SUPPLY	1kv+2 x Line volt		TEST RESULT	
230 V	1460 V		OK	
460 V	1920 V			
575 V	2150 V			

ITEM	QTY	DESCRIPTION	ITEM	QTY	DESCRIPTION
1	1	AC FLOODED CONDENSER COIL	15	1	REFRIGERATION SHUTOFF VALVE
2	1	PROPELLER FAN WITH SPEED CONTROL EC MOTOR	16	1	HOT GAS LINE BYPASS SOLENOID VALVE
	1	SCROLL COMPRESSOR	17	1	HEAD PRESSURE REGULATING VALVE
	1	EVAPORATOR BRAZED PLATES	18	1	RECEIVER WITH PRESSURE RELIEF VALVE
5	1	LIQUID LINE FILTER DRYER	19	1	THERMOSTAT
6	1	LIQUID LINE SOLENOID VALVE	20	1	FREEZESTAT
7	1	SIGHT GLASS MOISTURE INDICATOR	21	1	FLOW SWITCH
8	1	TXV THERMAL EXPANSION VALVE	22	1	WATER TANK. 67 GAL
9	1	TXV TEMPERATURE SENSOR	23	1	PUMP
10	1	TXV EQUALIZER LINE	24	1	ECONOMY PRESSURE GAUGE & BALL VALVE
11	1	COMP LOW PRESSURE SWITCH	25	1	CHECK VALVE
12	1	COMP HIGH PRESSURE SWITCH	26	3	CHILLED WATER SHUT-OFF VALVE
13	1	MANUAL RESET HIGH PRESSURE SWITCH	27	1	BRONZE Y STRAINER
14	1	REFRIGERATION PRESSURE RELIEF VALVE	28	1	BY-PASS PRESSURE RELIEF VALVE



LEGEND	
	REFRIGERANT PIPING ACR TYPE L
	CHILLED WATER PIPING SCH. 40 STEEL
	CHILLED WATER POLYSPRING HOSE
	CHILLED WATER ELBOW
	CHILLED WATER UNION
	REFRIGERANT P TRAP

TEMPERATURE CORPORATION								
PROCESS COOLING HEATING WEIGHING BLENDING GRINDING	MODEL NO.		OAC-5SZV-SP					
	TITLE							CHILLED WATER & REFRIGERATION SCHEMATIC
	SCALE	DESIGN	DRAWN	DATE	JOB NO.	DRAWING NO.	REV.	
	N.T.S.	R.L.	I.C.	MAY 14, 18	WIL-2004	30-0029	0	